

Concrete Garden Orbs - to match 346 Somerville Ave.



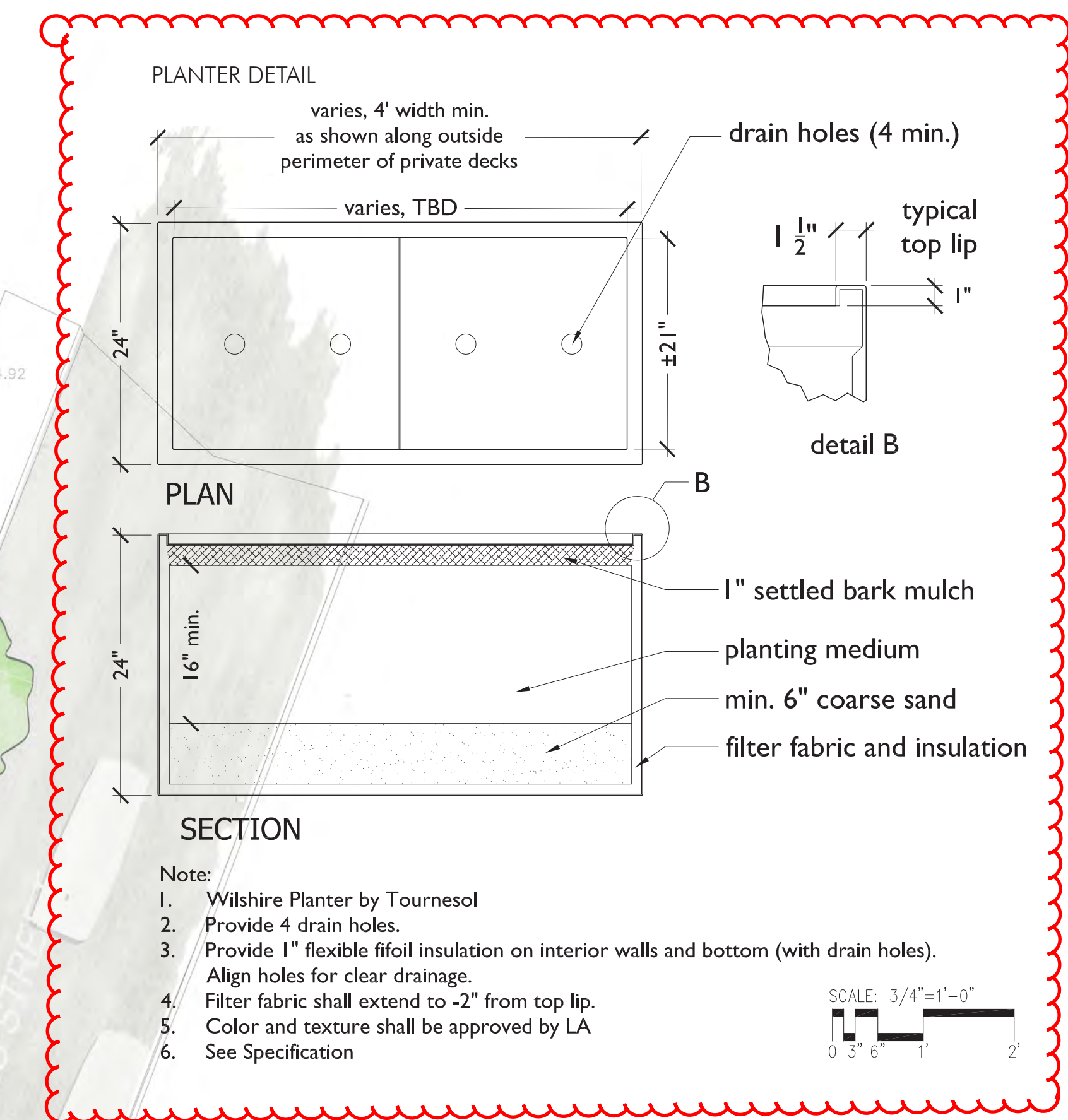
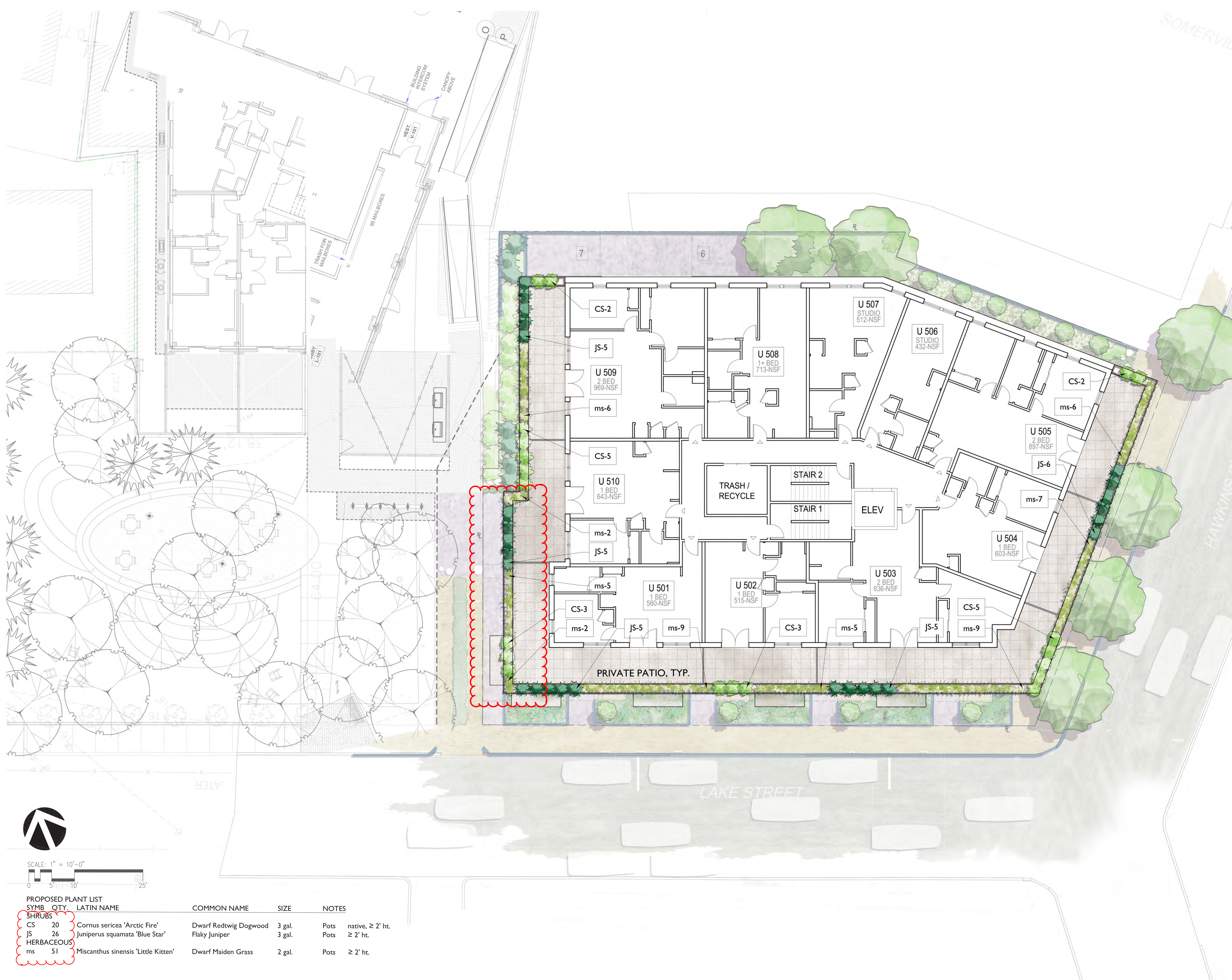
Permeable Unit Pavers Eco-Priora by Unilock

TREES TO BE REMOVED		
Species	DBH	Health
Ailanthus	26"	good
Sycamore maple	6.5"	good
Sycamore maple	14"	fair
Sycamore maple	14"	fair
Sycamore maple	8"	fair
Sycamore maple	8" + 14"	fair
Sycamore maple	6.5"	fair
Sycamore maple	13"	fair
Sycamore maple	18"	fair
Sycamore maple	22"	fair
Sycamore maple	20"	poor
zelkova	5"	good

- PLANTING NOTES
- All plant material shall be approved by the Landscape Architect prior to arrival on the site.
 - All plant material shall conform to the guidelines established by "The American Standard for Nurserymen Stock", published by the American Association of Nurserymen, Inc.
 - No substitution of plant species will be allowed without the approval of the Landscape Architect.
 - The Contractor shall locate and verify all utility line locations prior to staking and report any conflicts to the Landscape Architect.
 - All plants shall be staked out in their approximate location by the Contractor. The Contractor shall adjust the locations of these stakes as required by the Landscape Architect to account for subsurface utilities, other field conditions and to achieve design intent. Final locations must be approved by the Landscape Architect prior to planting.
 - No planting shall be installed before acceptance of rough grading of topsoil.
 - The rootballs of trees shall be planted 3" above adjacent finished grade. Excavate holes no deeper than the rootball of trees. Holes shall be at least 3' greater in diameter than root ball. Backfill planting hole with 'planting mix'. All plants which settle out of plumb or below finished grade shall be immediately replanted.
 - The rootballs of shrubs shall be planted 2" above adjacent finished grade. Excavate holes no deeper than the rootball of shrubs.
 - All shrubs, groundcovers and perennials shall be planted in continuous planting beds. All beds shall be excavated 12" and the topsoil and subsoil set aside for reuse. Remove all stone and debris from excavated soil. Backfill beds with 12" of 'planting mix' before planting shrubs, perennials and groundcovers.
 - 'Planting Mix' shall consist of 2 parts of topsoil saved from site excavations and 1 part compost. Thoroughly mix to create uniform blended mixture. If insufficient topsoil is available on the site, mix existing soil in a ratio of 1 part soil to 1 part compost. Remove all stones and debris larger than 2" from planting mix.
 - All beds as shown on the drawings shall be edged with a 4" trench neatly cut and backfilled with bark mulch. All beds shall be covered with no less than 2" depth settled bark mulch and no greater than 3" depth bark mulch.
 - All plants are to be thoroughly watered after installation, at least twice within the first 24 hours.

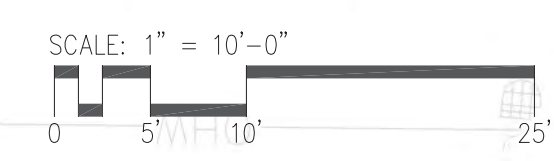
PROPOSED PLANT LIST				
SYMB	QTY.	LATIN NAME	COMMON NAME	NOTES
TREES				
AF	2	Acer x freemanii 'Armstrong'	Upright Red Maple	2.5-3" cal. B&B native
LS	10	Liquidambar styraciflua 'Slender Silhouette'	Fastigate Sweetgum	2.5-3" cal. B&B native
UA	4	Ulmus americana 'Princeton'	American Elm	2.5-3" cal. B&B native
SHRUBS & VINES				
CA	4	Clethra alnifolia 'Hummingbird'	Summersweet	5 gal. Pots native, ≥ 2' ht.
IV	4	Itea virginica 'Little Henry'	Dwarf Virginia Sweetpire	5 gal. Pots native, ≥ 2' ht.
KL	1	Kalmia latifolia 'Twenty'	Mountain Laurel	5 gal. Pots native, ≥ 2' ht.
KLm	4	Kalmia latifolia 'Minuet'	Dward Mountain Laurel	3 gal. Pots native, ≥ 2' ht.
PO	7	Parthenocissus quinquefolia	Virginia Creeper	3 gal. Pots native, ≥ 2' ht.
RO	10	Rhododendron 'Olga Mezitt'	P.J.M. Rhododendron	5 gal. Pots native, ≥ 2' ht.
VT	12	Viburnum trilobum 'Bailey Compact'	Dwarf American Cranberrybush	5 gal. Pots native, ≥ 2' ht.

HERBACEOUS				
ah	46	Amsonia hubrichtii	Hubricht's Bluestar	2 gal. Pots, 24" O.C. native, < 2' ht.
gm	132	Geranium maculatum 'Espresso'	Wild Geranium - pink	2 gal. Pots, 18" O.C. native, < 2' ht.
sn	47	Salvia nemorosa 'May Night'	Garden Sage	2 gal. Pots, 24" O.C. < 2' ht.
tp	50	Thymus pseudolanuginosus	Woolly Thyme	1 gal. Pots, 18" O.C. < 2' ht.



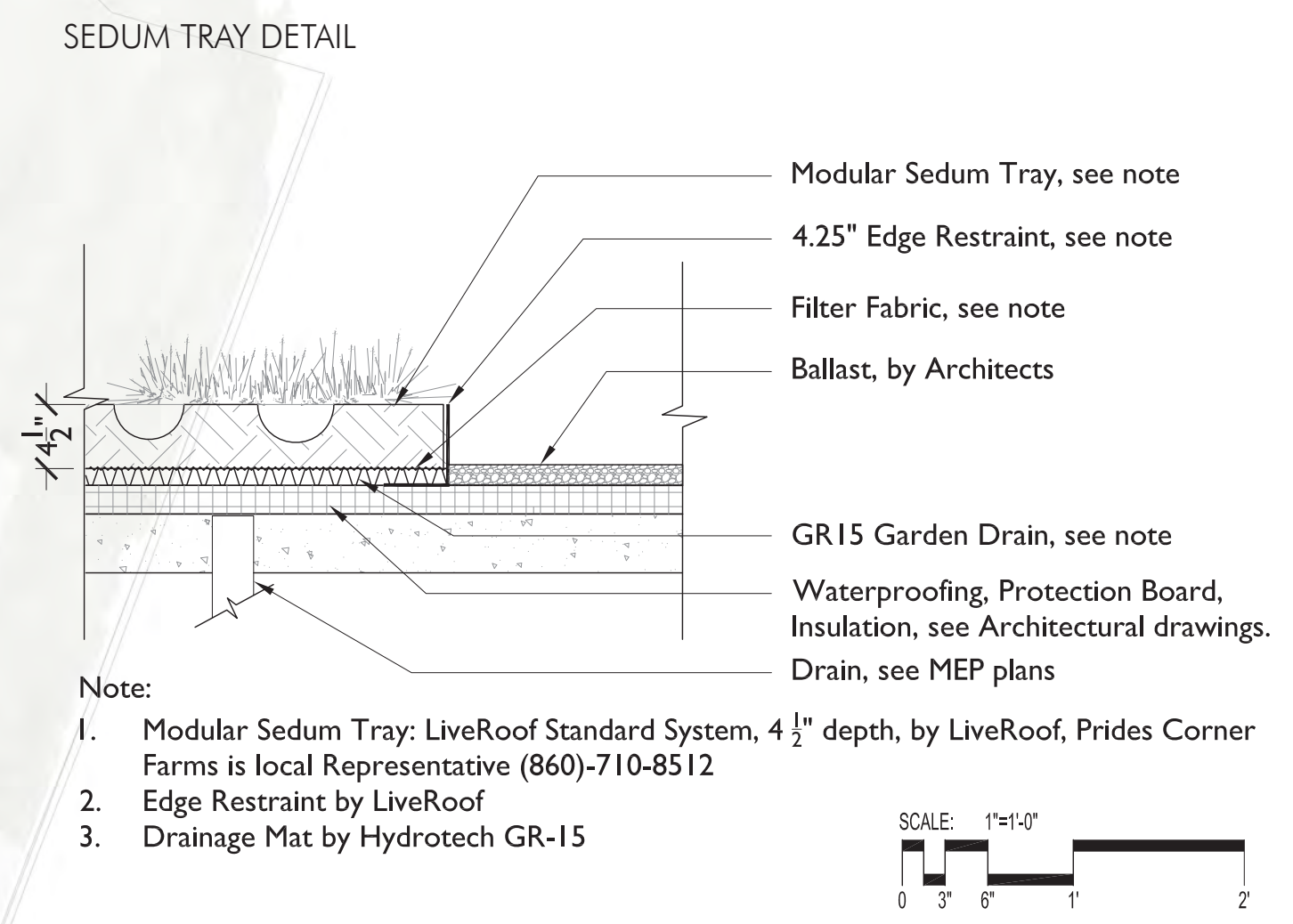
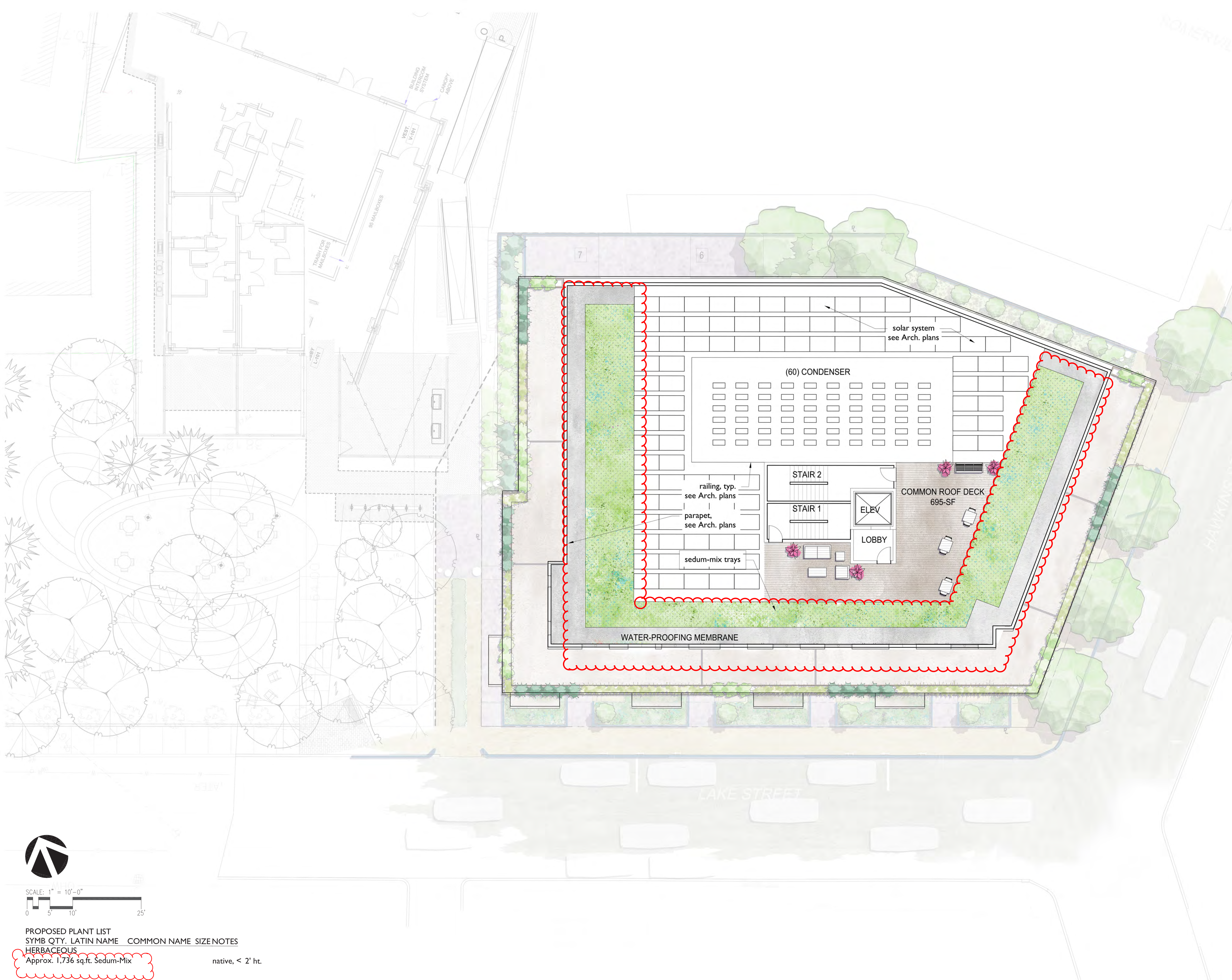
PLANTING NOTES

1. All plant material shall be approved by the Landscape Architect prior to arrival on the site.
2. All plant material shall conform to the guidelines established by "The American Standard for Nursery Stock", published by the American Association of Nurserymen, Inc.
3. No substitution of plant species will be allowed without the approval of the Landscape Architect.
4. The Contractor shall locate and verify all utility line locations prior to staking and report any conflicts to the Landscape Architect.
5. All plants shall be staked out in their approximate location by the Contractor. The Contractor shall adjust the locations of these stakes as required by the Landscape Architect to account for subsurface utilities, other field conditions and to achieve design intent. Final locations must be approved by the Landscape Architect prior to planting.
6. No planting shall be installed before acceptance of rough grading of topsoil.
7. The rootballs of trees shall be planted 3" above adjacent finished grade. Excavate holes no deeper than the rootball of trees. Holes shall be at least 3' greater in diameter than root ball. Backfill planting hole with 'planting mix'. All plants which settle out of plumb or below finished grade shall be immediately replanted.
8. The rootballs of shrubs shall be planted 2" above adjacent finished grade. Excavate holes no deeper than the rootball of shrubs.
9. All shrubs, groundcovers and perennials shall be planted in continuous planting beds. All beds shall be excavated 12" and the topsoil and subsoil set aside for reuse. Remove all stone and debris from excavated soil. Backfill beds with 12" of 'planting mix' before planting shrubs, perennials and groundcovers.
10. 'Planting Mix' shall consist of 2 parts of topsoil saved from site excavations and 1 part compost. Thoroughly mix to create uniform blended mixture. If insufficient topsoil is available on the site, mix existing soil in a ratio of 1 part soil to 1 part compost. Remove all stones and debris larger than 2" from planting mix.
11. All beds as shown on the drawings shall be edged with a 4" trench neatly cut and backfilled with bark mulch. All beds shall be covered with no less than 2" depth settled bark mulch and no greater than 3" depth bark mulch.
12. All plants are to be thoroughly watered after installation, at least twice within the first 24 hours.



PROPOSED PLANT LIST		LATIN NAME	COMMON NAME	SIZE	NOTES
SYMB	QTY				
SHRUBS					
CS	20	Cornus sericea 'Arctic Fire'	Dwarf Redtwig Dogwood	3 gal.	Pots native, ≥ 2' ht.
JS	26	Juniperus squamata 'Blue Star'	Flaky Juniper	3 gal.	Pots ≥ 2' ht.
HERBACEOUS					
ms	51	Miscanthus sinensis 'Little Kitten'	Dwarf Maiden Grass	2 gal.	Pots ≥ 2' ht.





- PLANTING NOTES
- All plant material shall be approved by the Landscape Architect prior to arrival on the site.
 - All plant material shall conform to the guidelines established by "The American Standard for Nursery Stock", published by the American Association of Nurserymen, Inc.
 - No substitution of plant species will be allowed without the approval of the Landscape Architect.
 - The Contractor shall locate and verify all utility line locations prior to staking and report any conflicts to the Landscape Architect.
 - All plants shall be staked out in their approximate location by the Contractor. The Contractor shall adjust the locations of these stakes as required by the Landscape Architect to account for subsurface utilities, other field conditions and to achieve design intent. Final locations must be approved by the Landscape Architect prior to planting.
 - No planting shall be installed before acceptance of rough grading of topsoil.
 - The rootballs of trees shall be planted 3" above adjacent finished grade. Excavate holes no deeper than the rootball of trees. Holes shall be at least 3' greater in diameter than root ball. Backfill planting hole with 'planting mix'. All plants which settle out of plumb or below finished grade shall be immediately replanted.
 - The rootballs of shrubs shall be planted 2" above adjacent finished grade. Excavate holes no deeper than the rootball of shrubs.
 - All shrubs, groundcovers and perennials shall be planted in continuous planting beds. All beds shall be excavated 12" and the topsoil and subsoil set aside for reuse. Remove all stone and debris from excavated soil. Backfill beds with 12" of 'planting mix' before planting shrubs, perennials and groundcovers.
 - 'Planting Mix' shall consist of 2 parts of topsoil saved from site excavations and 1 part compost. Thoroughly mix to create uniform blended mixture. If insufficient topsoil is available on the site, mix existing soil in a ratio of 1 part soil to 1 part compost. Remove all stones and debris larger than 2" from planting mix.
 - All beds as shown on the drawings shall be edged with a 4" trench neatly cut and backfilled with bark mulch. All beds shall be covered with no less than 2" depth settled bark mulch and no greater than 3" depth bark mulch.
 - All plants are to be thoroughly watered after installation, at least twice within the first 24 hours.

PROPOSED PLANT LIST

SYMB	QTY.	LATIN NAME	COMMON NAME	SIZE	NOTES
HERBACEOUS					
	Approx. 1,736 sq.ft.	Sedum-Mix			native, < 2' ht.



Acer x freemanii 'Armstrong'
Upright Red Maple



Liquidambar styraciflua 'Slender Silhouette'
Fastigate Sweetgum



Ulmus americana 'Princeton'
American Elm



Viburnum trilobum 'Bailey Compact'
Dwarf American Cranberrybush Viburnum



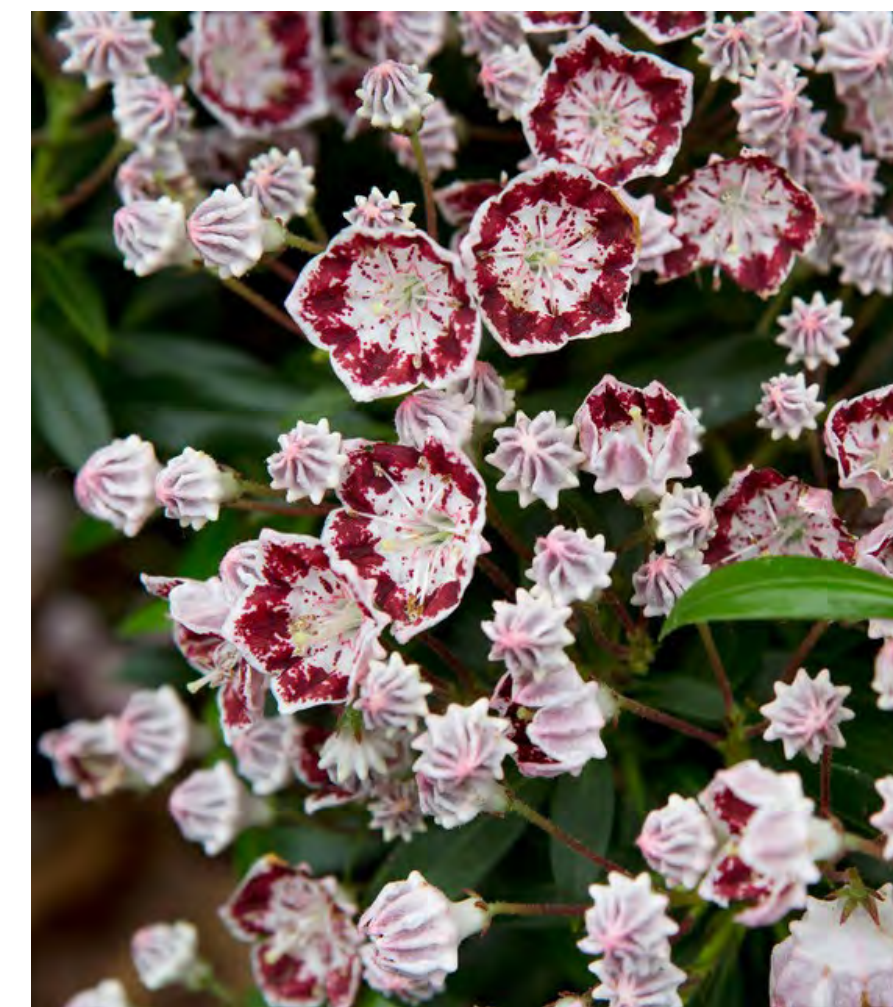
Rhododendron 'Olga Mezitt'
P.J.M. Rhododendron



Itea virginica 'Little Henry'
Dwarf Virginia Sweetspire



Kalmia latifolia 'Twenty'
Mountain Laurel



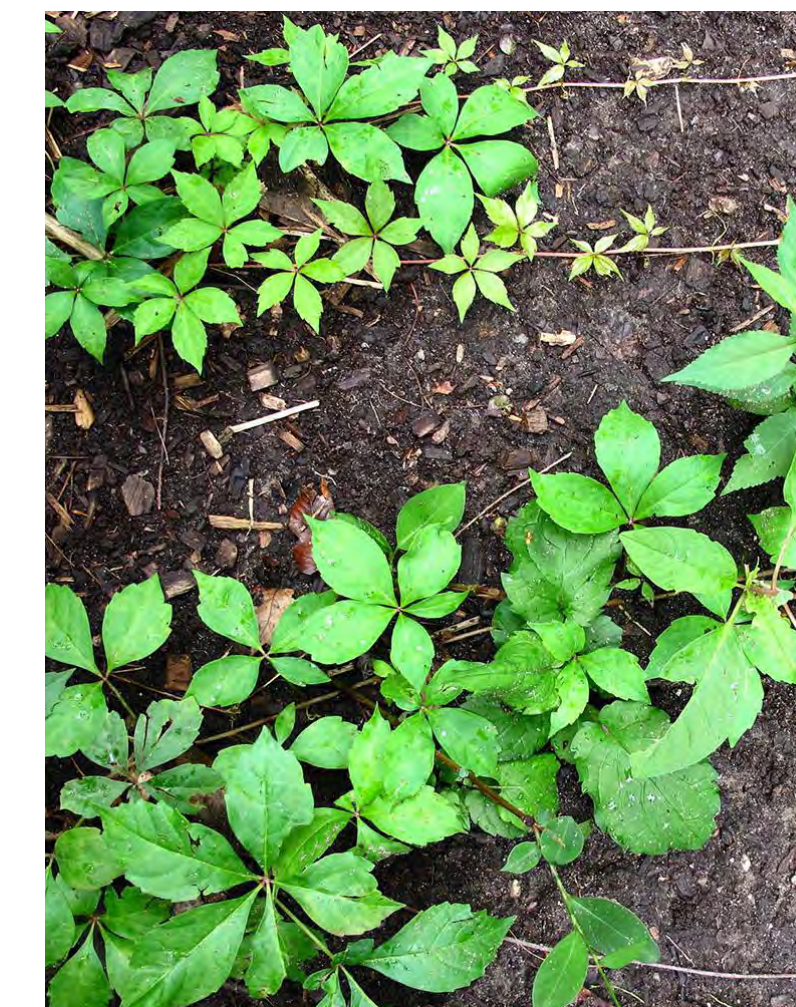
Kalmia latifolia 'Minuet'
Mountain Laurel



Rhus aromatica 'Gro-Low'
Fragrant Sumac



Clethra alnifolia 'Hummingbird'
Summersweet



Parthenocissus quinquefolia
Virginia Creeper



Thymus pseudolanuginosus
Woolly Thyme



Amsonia hubrichtii
Hubricht's Bluestar



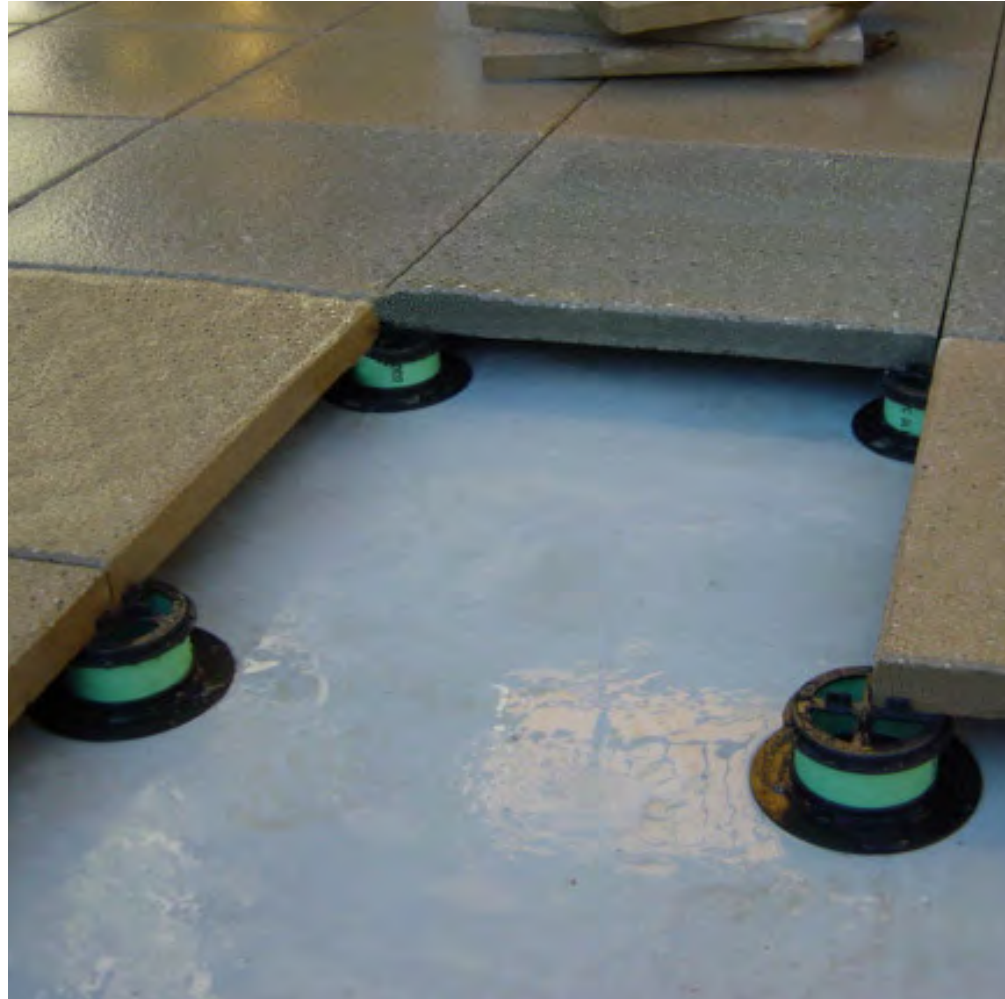
Geranium maculatum 'Espresso'
Wild Geranium



Nepeta racemosa 'Blue Wonder'
Catmint



Salvia nemerosa 'May Night'
Garden Sage



Concrete Pedestal Pavers



Wood Pedestal Pavers by Bison



Planter & Pedestal Paver System



Fiberglass Planters by ORE



Cornus sericea 'Arctic Fire'
Dwarf Redtwig Dogwood



Juniperus squamata 'Blue Star'
Flaky Juniper

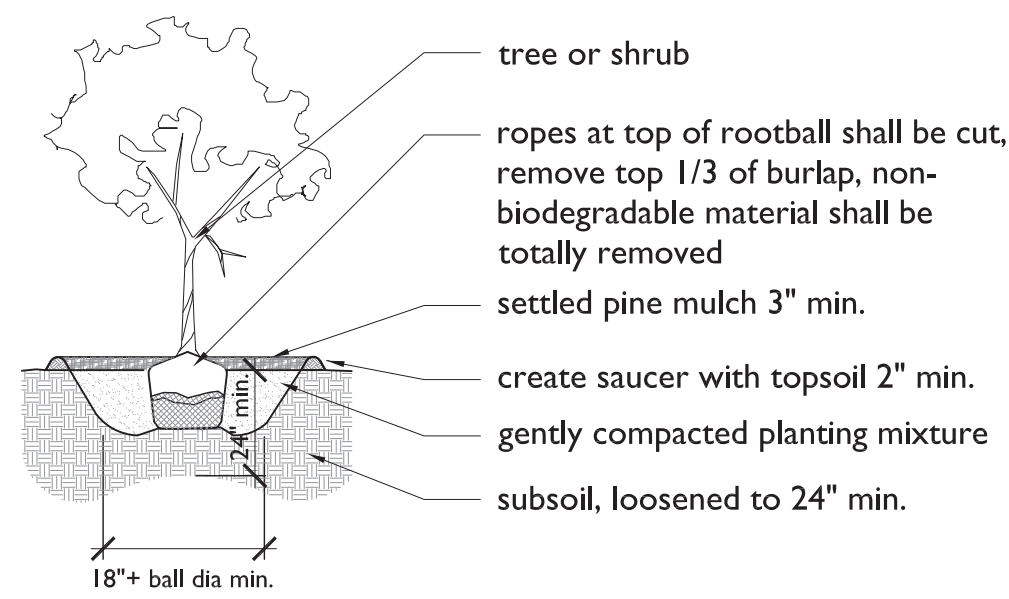


Miscanthus sinensis 'Little Kitten'
Dwarf Maiden Grass

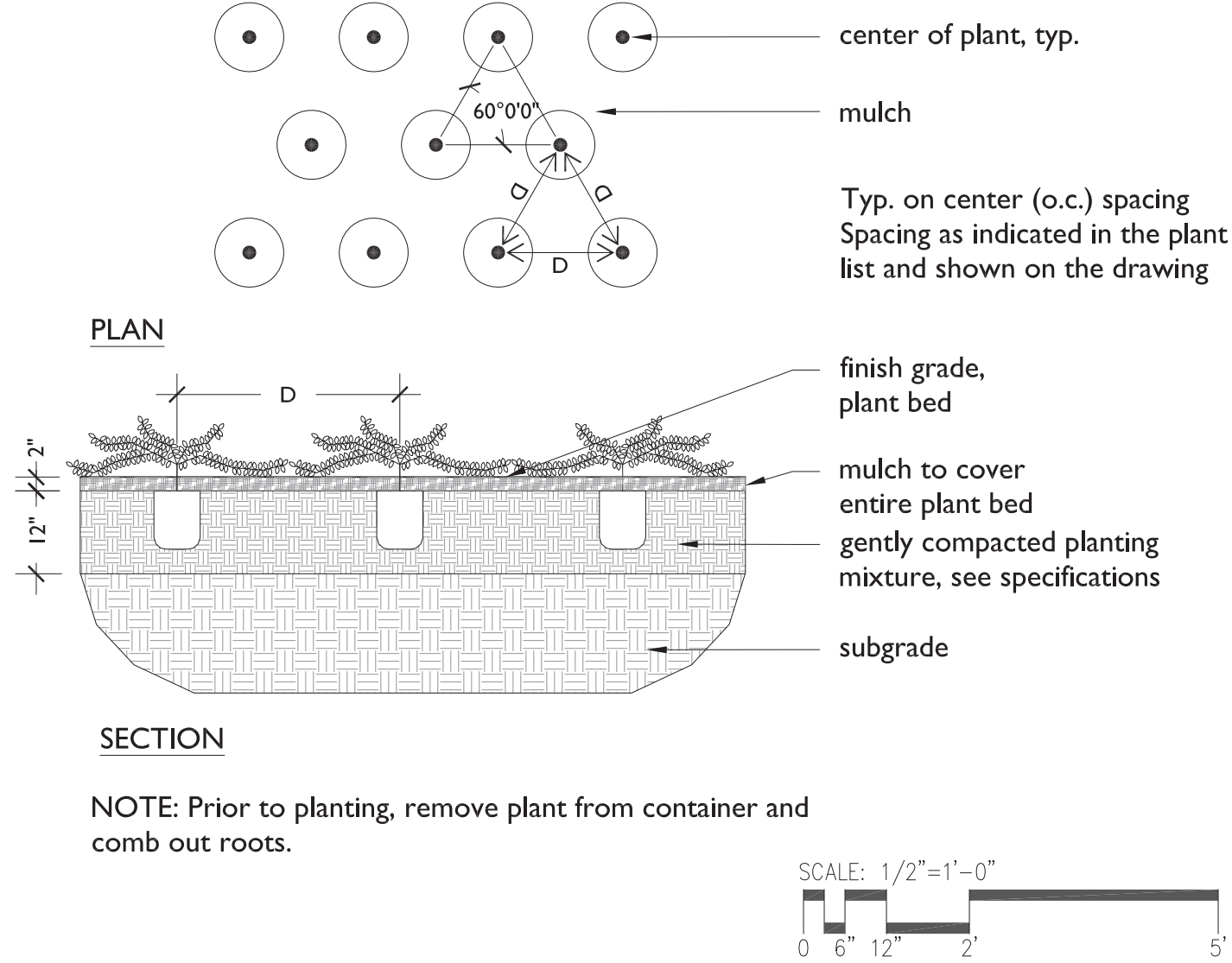


Sedum Mix Mat by Sempergreen

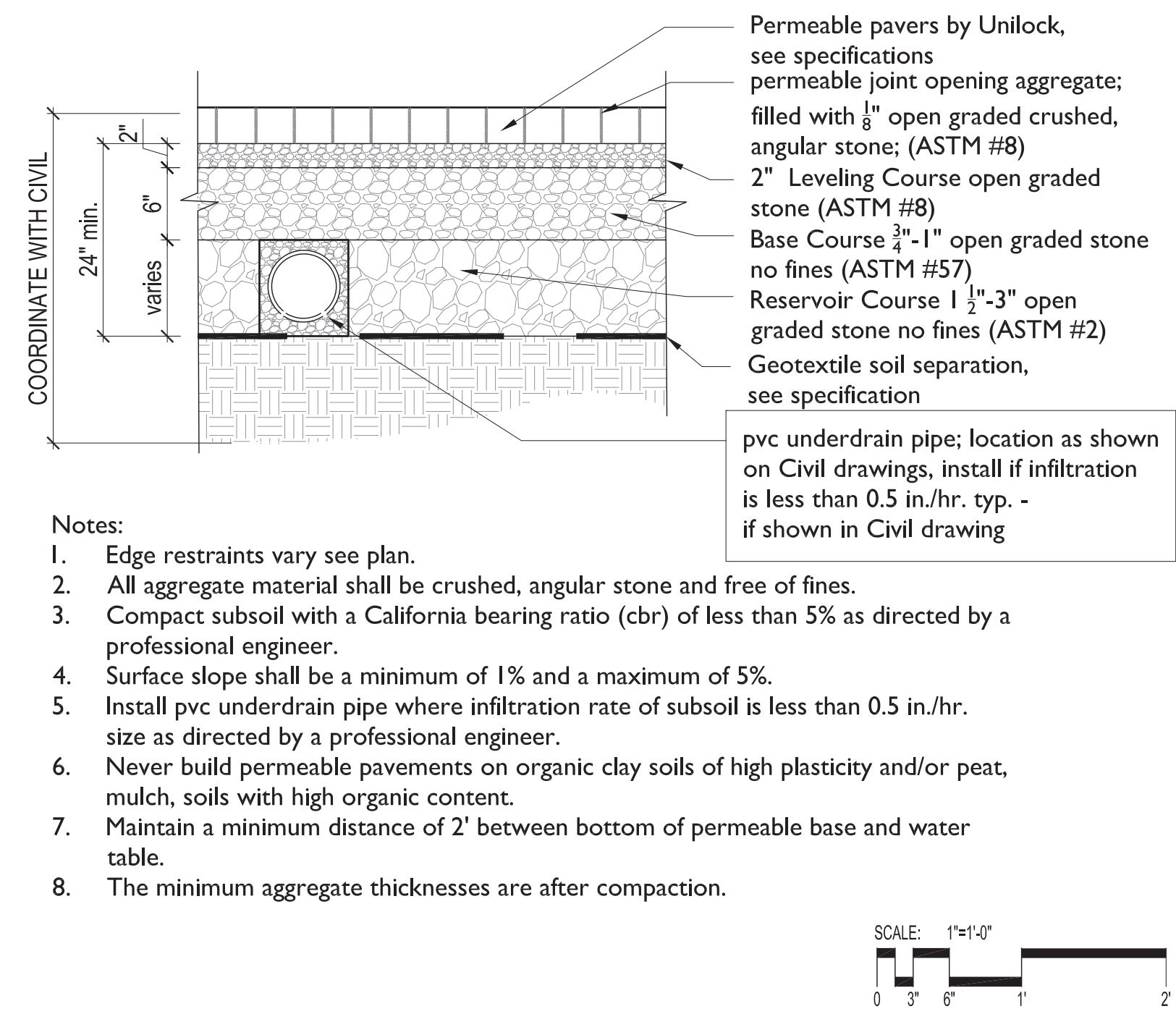
TYPICAL PLANT (TREE OR SHRUB) DETAIL



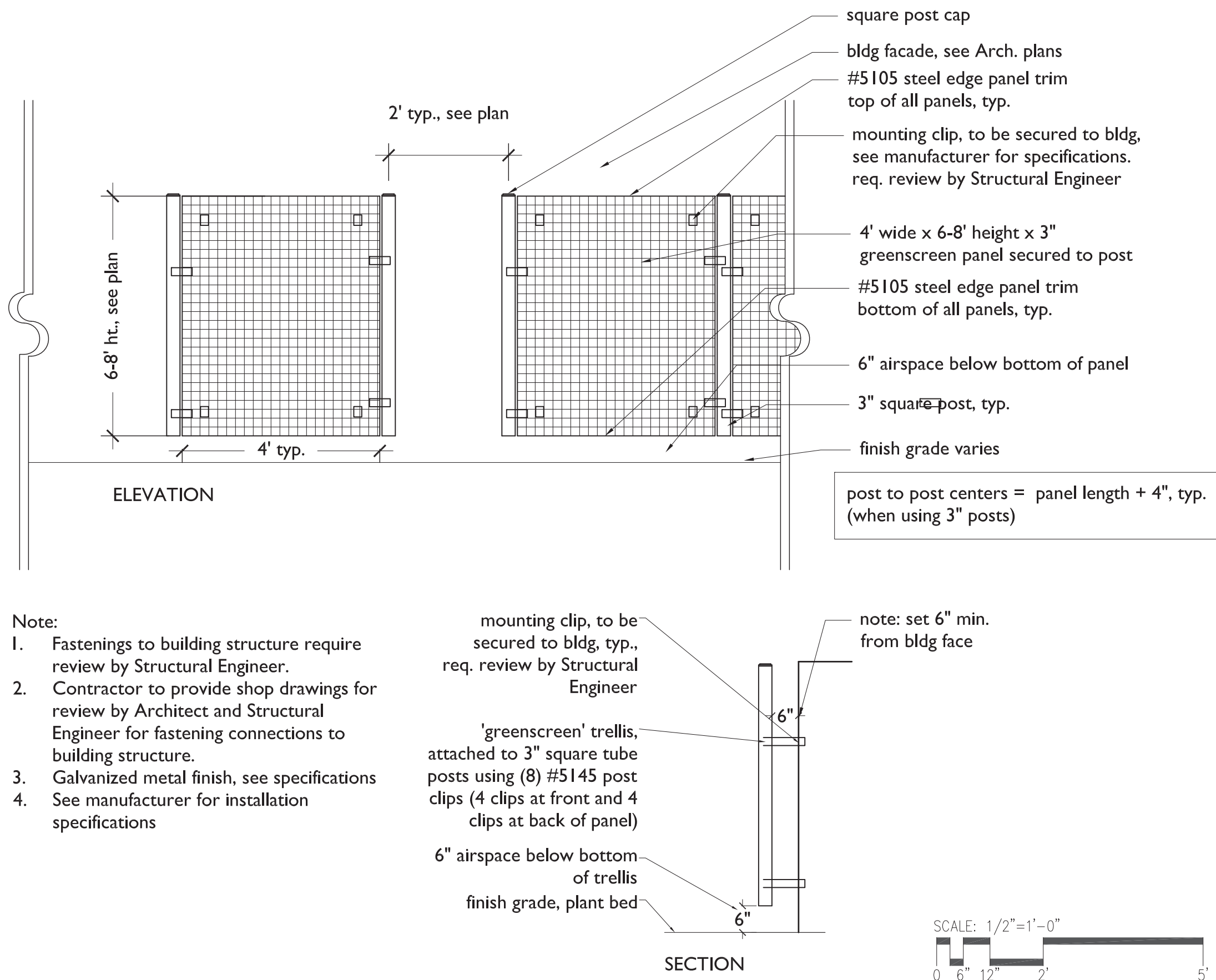
TYPICAL PERENNIAL DETAIL



PERMEABLE UNIT PAVER DETAIL



GREEN SCREEN DETAIL



10. DEVELOPMENT STANDARDS
Green Score

Table 10.4.1 Green Score Calculation

	Credit	Multiplier
Soils		
Landscaped area with a soil depth < 24 inches	actual sf	0.3
Landscaped area with a soil depth => 24 inches	actual sf	0.6
Pervious Paving with 6 to 24 inches of subsurface soil or gravel	actual sf	0.2
Pervious Paving with more than 24 inches of subsurface soil or gravel	actual sf	0.5
Groundcovers		
Turfgrass, mulch, and inorganic surfacing materials	actual sf	0.1
Plants		
Vegetation less than two (2) feet tall at maturity	actual sf	0.2
Vegetation at least two (2) feet tall at maturity	12 sf.	0.3
Trees		
SMALL TREE	50 sf.	0.6
LARGE TREE	450 sf.	0.6
Preserved Tree	65 sf.	0.8
Engineered Landscape		
Vegetated Wall	actual sf	0.1
Rain gardens, bioswales, and stormwater PLANTERS.	actual sf	1.0
Green Roof with up to 6" of growth medium	actual sf	0.1
Green Roof with 6"-10" of growth medium	actual sf	0.4
Green Roof of 10"-24" growth medium	actual sf	0.6
Green Roof of over 24" growth medium	--	per individual landscape elements

Green Score is a performance-based environmental landscape standard measured as a ratio of the weighted value of all landscape elements to the total land area of a lot.

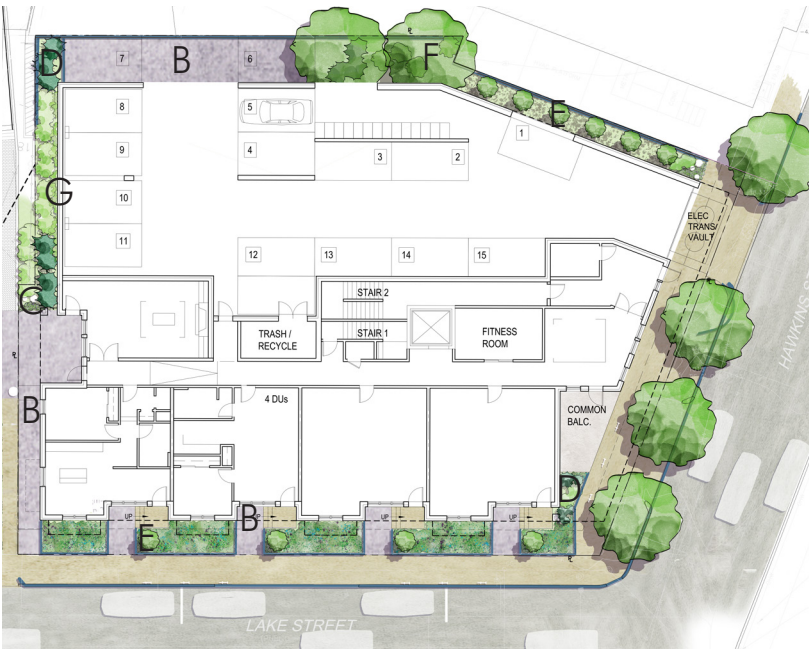
3 Hawkins Street 13,950.6 SF Total

Key		Multiplier	Bonus	Credit	
A	Soils Landscaped Area with a soil depth => 24 inches	.6		929.3	557.6
B	Soils Pervious Paving with more than 24 inches of subsurface soil or gravel	.5		812.9	406.5
C	Plants Vegetation less than two feet tall at maturity	.2	PV .1	12.9	3.9
D	Plants Vegetation at least two feet tall at maturity	.3		(136)12	489.6
E	Trees Small Tree	.6	NS .1	(10)50	350
F	Trees Large Tree	.6	NS .1	(2)450	630
G	Engineered Landscape Vegetated Wall	.1	NS .1	200	40
H	Engineered Landscape Green Roof with up to 6" of growth medium	.1	NS .1	1735.7	347.1
I	Engineered Landscape Green Roof of 10"-24" growth medium	.6		595.6	357.4
	Total				3,182.1
	Green Score Bonus Publicly Visible Landscape = PV = .1 Native Species = NS = .1				

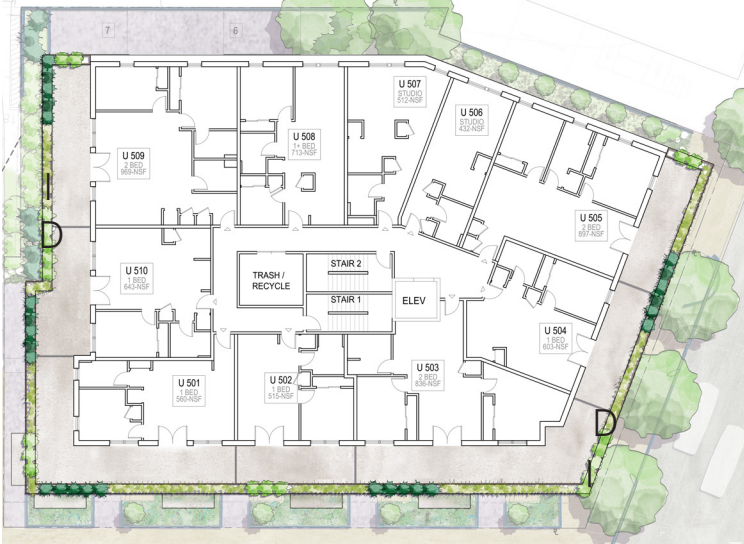
Table 10.4.2 Green Score Bonuses

	Credit	Multiplier
Bonus Credits		
Publicly visible landscape	--	0.1
Native species	--	0.1
High value species	--	0.1
50% of irrigation is harvested rainwater	--	0.1
Food cultivation	--	0.1
De-paved LOT AREA	--	0.1

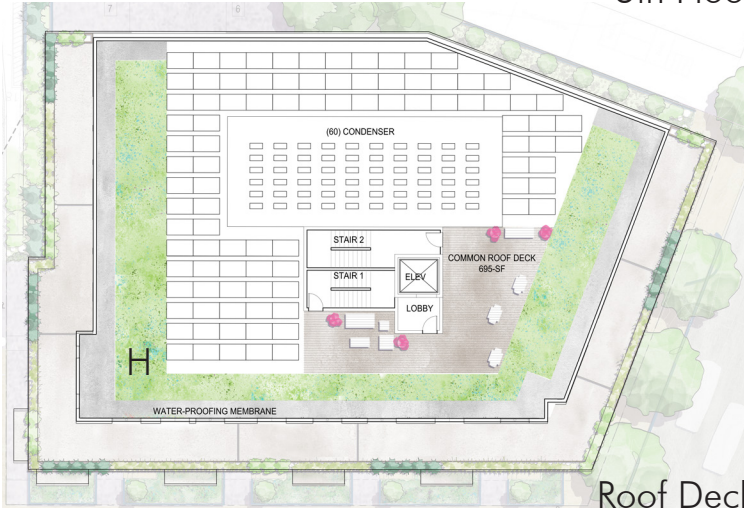
3,182.1 / 13,950.6 = .23 Green Score
minimum .20 required



Ground Level



5th Floor



Roof Deck